

Brochure

# ONMSi Fiber Analytics

Analytics and Reporting Solution for ONMSi



Access Hidden Insights from  
Thousands of Fibers Events



Diagnose and  
Prioritize Actions



Track Results, Trend  
Improvements, Manage Initiatives



Identify and track impactful initiatives by network domain and advance the KPI's that drive your business. Expert fiber diagnostics expose the actionable fiber health insights hidden in your diverse data sets. Prioritize assignments to rapidly improve network services.

Service providers are missing out on business improvement opportunities hidden in the flood of available data. Operators who harness this test data gain substantial improvements in their business performance and the service quality they offer.

ONMSi Fiber Analytics enables these gains by applying decades of fiber domain expertise to each customer's specific needs to provide intelligent analytics and customizable dashboard reporting to clearly communicate actionable insights. ONMSi™ offers customers the ability to remotely test and monitor all types of fiber networks for fiber characterization, security intrusion detection and monitoring of degradation and fiber outages. ONMSi Fiber Analytics enables identification and tracking of initiatives that will make a difference in your business. For more on ONMSi, see more at [ONMSi Remote Fiber Test Systems](#).

## Benefits

- Maximize revenue by retaining existing customers and attracting new business
- Launch new services faster with confidence; accelerate time to revenue
- Transform business processes to increase return on OPEX investment and fiber asset maintenance
- Improve network and service quality through targeted service improvement initiatives
- Facilitate analysis with actionable analytics for Long Haul, Metro Ring, Wireless and FTTX fiber networks
- Use with DWDM, CWDM, PON, XGS-PON and 5G-4G RAN to Fiber demarcation

## ONMSi Fiber Analytics Dashboards are Designed for All Remote Fiber Test Network Applications

**LONG HAUL NETWORK**

**ACCESS**  
FTTH \* FTTH  
PON \* DAA

**FIBER TO WIRELESS DEMARCATION**

**METRO RING**

**DATA CENTER INTERCONNECT**

**BENEFITS AND OPPORTUNITIES TO REDUCE WORKLOAD BY 50-75%**

- ▶ One expert test set up with automation & network inventory capture during construction
- ▶ Server based data processing generates network reports & insights
- ▶ Avoid network outages and service impairments
- ▶ Automatic fault detection, location, trending and tracking accelerates workflow
- ▶ A team prepared for rapid change, natural disaster, upgrade and 24 x 7 network resiliency

1504.900.0523

## ONMSi Fiber Analytics Helps Network Operators in Three Steps:

### 1 Collapse Data Silos, Unlock Data Synergies

- Combine and correlate diverse data sets
- Scale enterprise-wide data aggregation

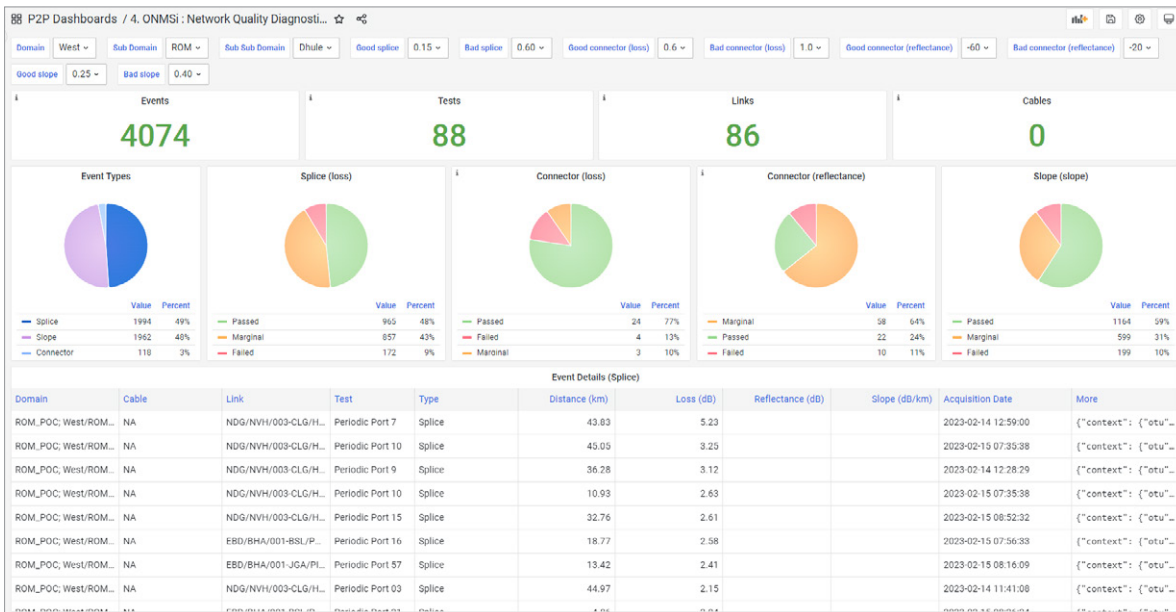
### 2 Access Insights Hidden in Raw Data from Thousands of Fiber Events

- Standard or customize KPI's such as Optical Network Quality Diagnostics
- Create intelligent analytics via decades of VIAVI domain expertise
- Define and track impactful process or technology initiatives

### 3 Prioritize Actions, Trend Results, and Impact Performance

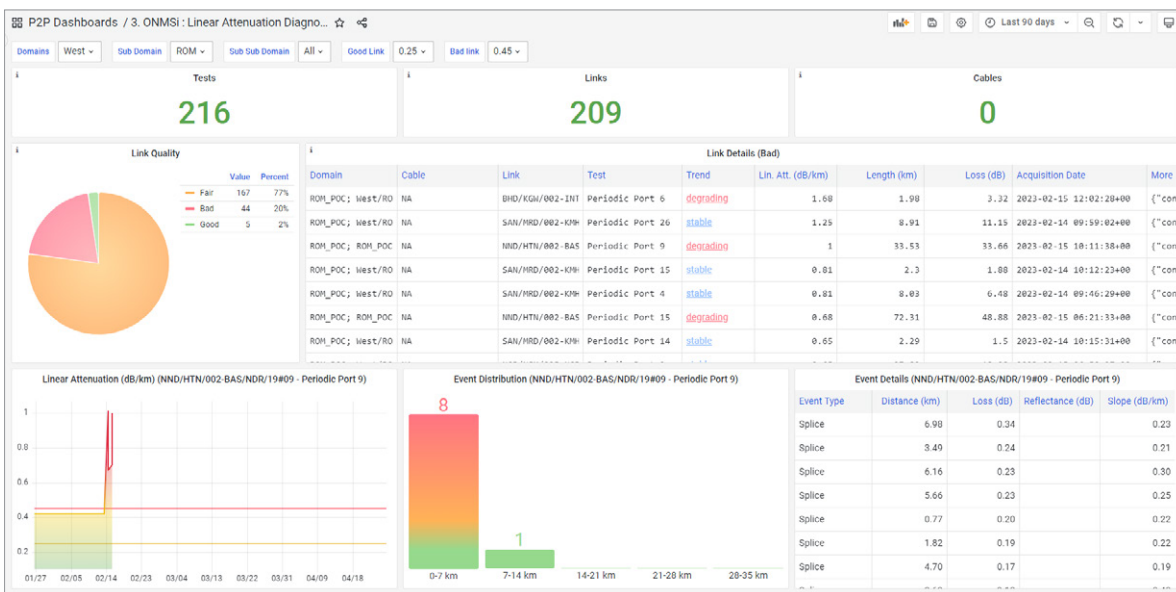
- Provide informative reports and dashboards on-demand for decision makers
- Customize diagnostics to prioritize actions for rapidly changing initiatives
- Track and deliver results on new service roll-outs or customer satisfaction initiatives

# ONMSi Fiber Analytics Dashboards: Enable Rapid, Intuitive Assessment, Action and Assignment



## Automate Fiber Health and Degradation Diagnostics

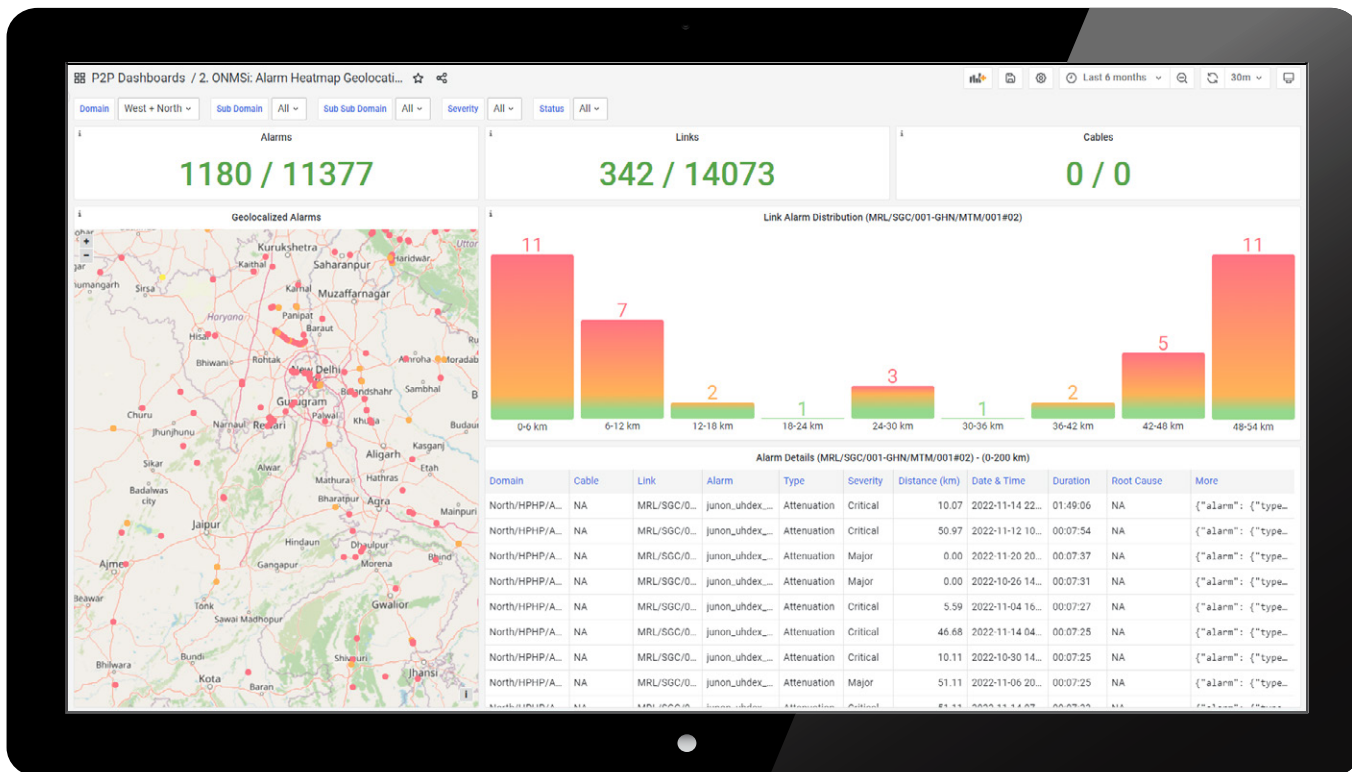
- Visualize global fibers rated by quality
- Formulate prioritized workforce assignments
- Provide customized dashboards/reports to customers using domains set up in ONMSi to meet SLAs or KPIs



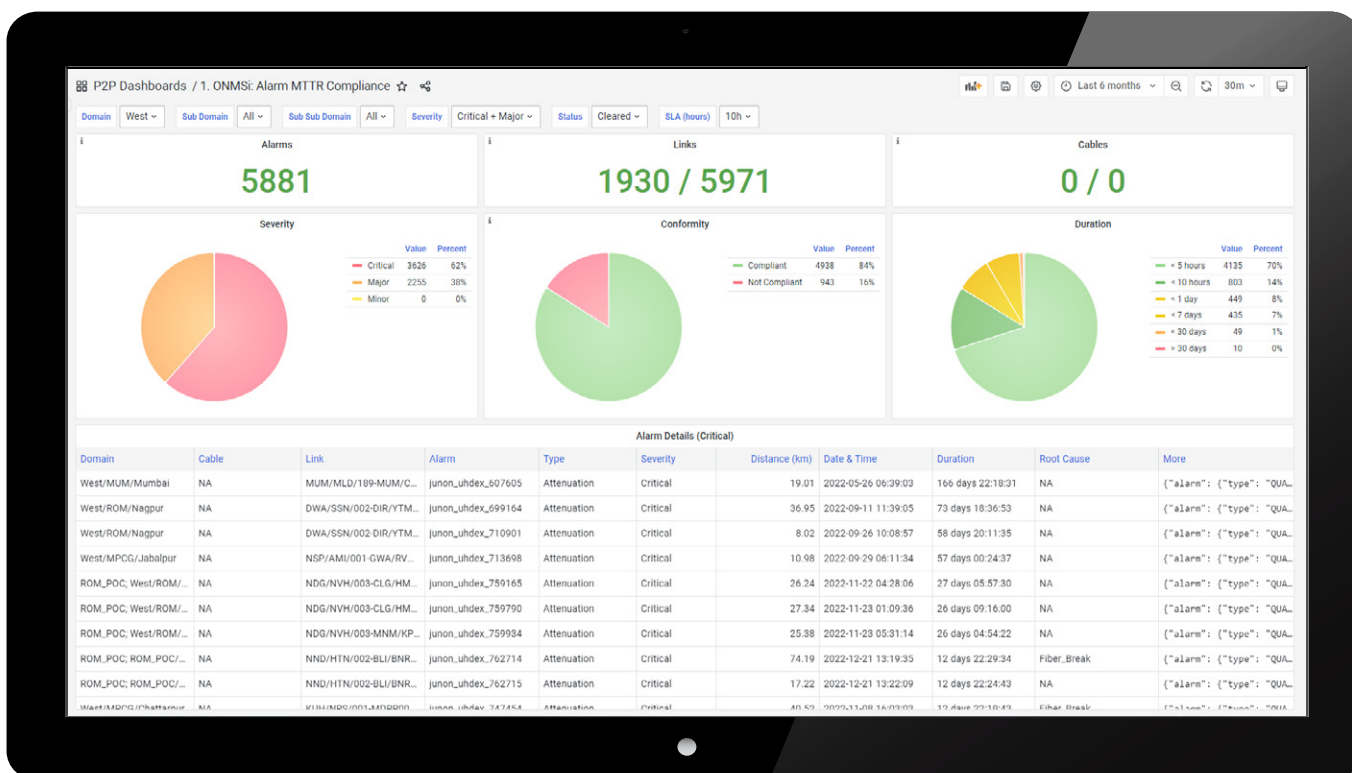
## Understand Which Faults Plague Your Network

- Linear Attenuation Diagnostics reveal fiber health details across the network
- Use Optical Network Quality diagnostics to identify fibers with quality impacting causal events, reflectance, connector loss or splice loss
- Drill to prioritized fiber cable IDs for more and establish targeted workorders

Track compliance of your processes, accelerate MTTR and use the new Heatmap to find issues and drill down to the cable, fiber link and fault that requires remediation. Determine which routes are ready for sale. There are several other reports you can pull daily such as the Daily PON Test Extractor to see how many links were tested on any given day. This helps you manage progress during a complex PON construction project.

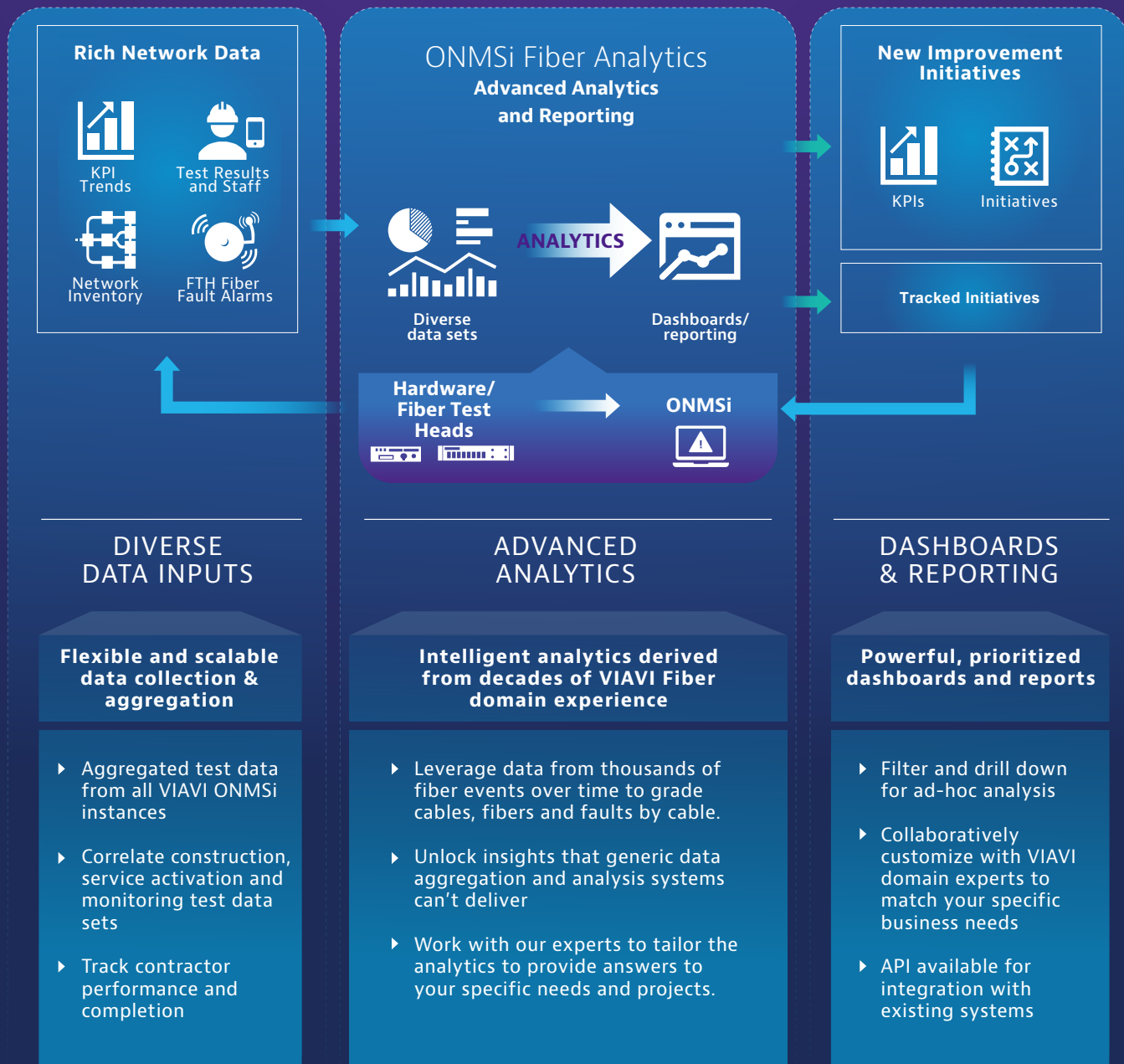


Above: ONMSi Alarm Heatmap  
Below: ONMSi Alarm MTTR Compliance



# How Does ONMSi Fiber Analytics Transform Data to Drive Results for Fiber Network Operators?

Leverage ONMSi/FTH Data to Improve Decisions and Business Performance



## INSIGHT FOR ALL FIBER NETWORKS TO DRIVE BUSINESS RESULTS

Most operators are managing a variety of customers tiers and services, but one thing is constant: the need for increased visibility into trouble spots and resource usage. ONMSi Fiber Analytics can bring together a view of your long haul, metro ring, dark leased fiber, ODN, and PON network areas. Enable users to define and track critical programs, network changes, and team performance against goals. Ensure you make the most of limited resources by prioritizing the critical problems and risks with ONMSi Fiber Analytics.

1503.900.0523

## ONMSi Fiber Analytics Use Cases/Applications:

### Track the KPI's that drive your business on the Fiber Health Dashboards

- Identify current conformance to corporate network and process goals
- Trend which KPI's are in trouble to avoid costly outages – intervene faster
- Drill down to understand root cause factors and network events causing service issues



### Visualize and proactively manage performance trends with adaptive, interactive reporting

- New reporting can be developed quickly by VIAVI without IT involvement
- Network dashboards are auto updated and distributed daily across the network
- Empower staff to optimize business management with drill down data
- Report attributes like Linear Attenuation and Optical Network Quality diagnostics



### Evaluate network equipment supplier or contractor performance

- Evaluate the best performing Customer Premise Equipment (CPE) to drive sourcing decisions
- Use data to monitor compliance with construction and maintenance contracts
- Manage the quality of newly built links and the responsible parties



### Target and track technology deployments initiatives for PON, XGS-PON, DWDM, 5G and DAA

- Quantify deployed equipment for proper lifecycle management
- Identify fiber links that need remediation in advance of service upgrades
- Track quality of plant and communicate to customers rapidly when issues arise



### Track and communicate KPI performance to determine merit achievement across workgroups

- Demonstrate trending progress toward goal, highlighting improvement needs
- Vary dashboards by team to emphasize relevant metrics by respective network FTTX services



**Contact your VIAVI representative for a demonstration today!**



Contact Us **+1 844 GO VIAVI**  
(+1 844 468 4284)

To reach the VIAVI office nearest you,  
visit [viavisolutions.com/contact](https://viavisolutions.com/contact)

© 2023 VIAVI Solutions, Inc.  
Product specifications and descriptions in this  
document are subject to change without notice.  
nitro-bi-onmsi-br-nto-nse-ae  
30193036 901 0523